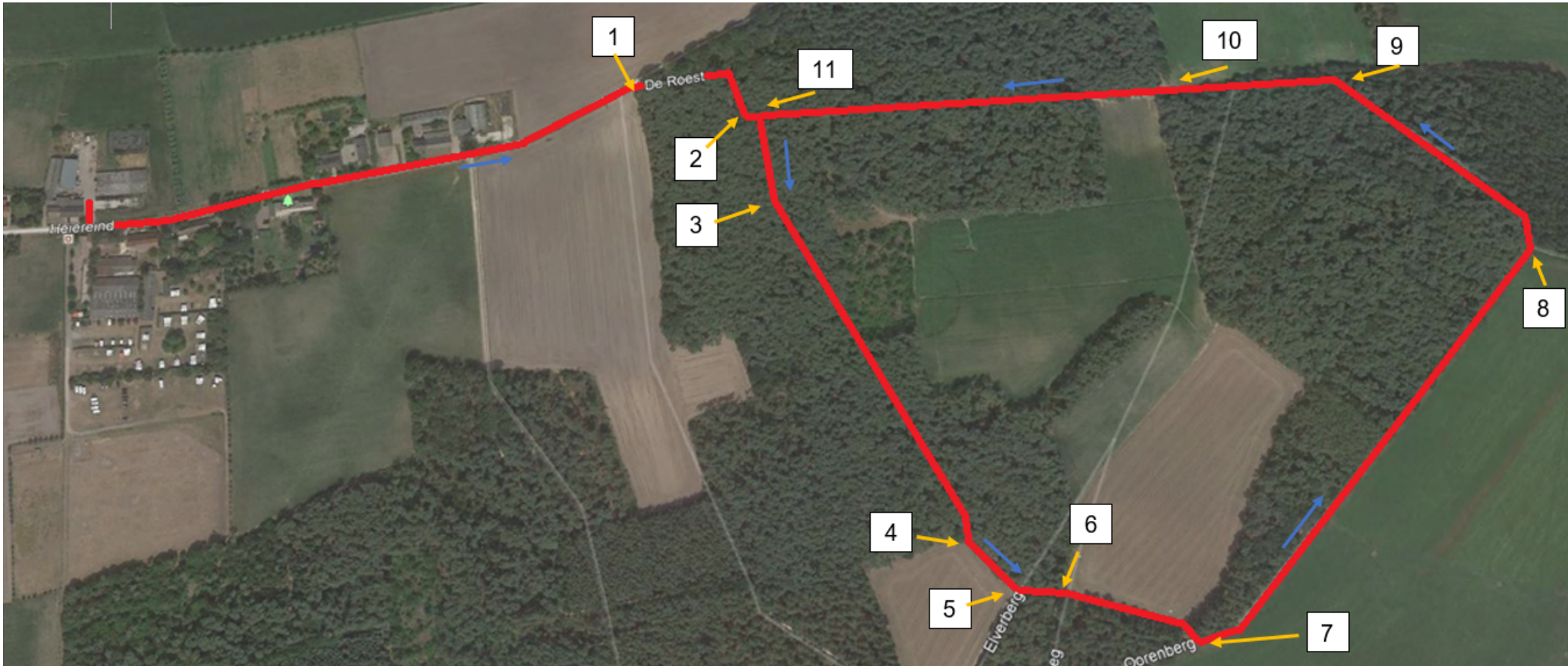




ALPACAFARM RIETHOVEN

Route Alpaca wandeling EN

+316 42 39 03 11



When you leave the yard, turn left onto the street. Walk out of the street until you come to Y split (1). Here you keep to the right and you enter the woods. When you are in the woods, take the first path to the right (2). Keep walking on this path until you come across another Y split (3). Now keep left. You will come across three thin trees on the path that you can cross. As you walk out of the woods (4), continue to follow the path to the first crossing (5). Go straight ahead at this crossing. At the second crossing, continue straight on (6).

Then keep walking until the T-split (7). Turn left at the T-split. Then keep walking down this path until the next T-split and turn left here (8). You are now back in the woods. Keep following this path until you come across another crossing. At this crossing, go straight ahead and follow the bend (9). Shortly after that you will encounter another T-split and you go straight on again (10). You then go back into the woods. Keep following this path until you are out of the woods (11). Once you are out of the woods you will be back on the paved road and keep following this road until you are back at the farm.